



## General Description

The 2,363-acre Howard Buford Recreation Area (HBRA) is the largest of Lane County's 73 parks. The park's dominant physical feature is Mt. Pisgah with a summit (1531' above sea level) that rises over 1000 feet above the Willamette River's Coast and Middle Forks, which flow around its base. From the summit, hikers and equestrian visitors can enjoy expansive views in all directions except to the north.

On Mount Pisgah's west slope is a 210 acre arboretum, leased to the Friends of Mt. Pisgah Arboretum, a private, non-profit organization that manages the site. The arboretum contains a variety of plant communities, seven miles of nature trails, a reservable pavilion, and a small visitor center.

In the north end of the park, the Lane County Sheriff's Mounted Posse operates a 20-acre horse arena, which is used for riding events. The Friends of Buford Park & Mt. Pisgah operate a 5-acre native plant nursery with the seeds used to restore native vegetation in the park after invasive species are removed.

The remainder of the HBRA is mostly open country containing 17 miles of trails providing access to the diverse natural areas within the park. Each season offers its own beauty and excellent opportunities to take in what nature has to offer.

## Trail Etiquette

Please respect these guidelines:

- Please stay on marked, designated trails and don't create new trails.
- Please don't disturb animals or pick wildflowers. This year's flowers are next year's seeds.
- Carry your trash out with you. Leave nothing but footprints.
- When hikers and horse riders meet, hikers should step to the downhill side of the trail and quietly allow riders to pass (to avoid spooking the horse).

## Help Take Care of Your Park

Interested in assisting with trail construction, maintenance, and rehabilitation? Want to assist other park users in enjoying the park. Is your business looking for a project for community service? If you are interested in volunteering for the Adopt-a-Trail Program, Volunteer Trail Patrol, trail work or other park enhancements, contact:

Lane County Parks  
90064 Coburg Road  
Eugene, OR  
541.682.2000  
[laneparks@co.lane.or.us](mailto:laneparks@co.lane.or.us)  
[www.lanecounty.org/parks](http://www.lanecounty.org/parks)

Please report any suspicious behavior or violations of the Park Rules to the Park Rangers at the above contact. Thank you.



Guide to:

Lane County's

# *Howard Buford Recreation Area*

with Trail Map



**Recreate With Us...  
You'll Be Glad You Did!**

## Trails

### Trail #1 - Beistel's West Summit Trail

**Length:** 1.4 miles

**Elevation Gain:** 1050'

**Use:** Hikers only, from trailhead to junction of #1 and #3. Horses and hikers allowed above junction of #1 and #3.

**Access Location:** West Trailhead

**Description:** This is the principal hiker route to Mount Pisgah's summit. First half is steep, the upper half being gentler. The trail offers little shade, however affords panoramic views to the north, west and south.



### Trail #2 – Beistel's East Summit Trail

**Length:** 2.5 miles

**Elevation Gain:** 1000'

**Use:** Horses and hikers

**Access Location:** East Trailhead

**Description:** Trail crosses 0.3 miles of wetland, and then climbs 2.1 miles up the east ridge of Mount Pisgah. Trail passes through prairie and oak woodland, which provides some shade. This trail is moderate to steep.

### Trail #3 - West Slope Trail

**Length:** 3.9 miles

**Elevation Gain:** 600'

**Use:** Horses and hikers

**Access Location:** North or East Trailhead

**Description:** Grades are moderate to steep, however there are several long, level stretches. Most of trail is in open sun, with short segments in shade. Views vary from local to panoramas as trail traverses open prairie, oak savanna, and some Douglas fir.

### Trail #4 – North Boundary Trail

**Length:** 2.8 miles (4.2 miles from North to East Trailheads via Trails #3, 4 & 2)

**Elevation Gain:** 650'

**Use:** Horses and hikers

**Access Location:** North or East Trailhead

**Description:** Grades vary from level to moderate, with several short steep stretches. This trail mostly traverses oak and mixed conifer forests, affording plenty of shade.

### Trail #5 – Quarry Road Trail

**Length:** 1.2 miles (outside Arboretum)

**Elevation Gain:** 100'

**Use:** Hikers only

**Access Location:** West Trailhead

**Description:** This mostly level trail offers views of open meadow and mixed hardwood riparian forest with lush understory along an old river channel.

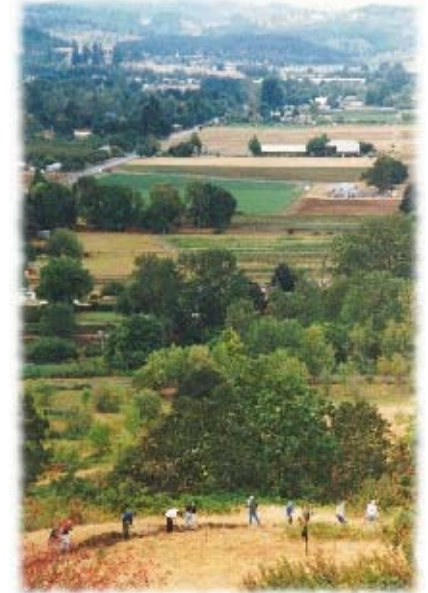
### Trail #6 – Dery's South Summit Trail

**Length:** 1.8 miles

**Use:** Horses and hikers

**Access Location:** East Trailhead

**Description:** Grade is moderate to start then ascends steeply up the south ridge to summit. This trail has lots sun, expansive views of prairie and little shade.



### Trail #7 – Bridge Bowl Trail

**Length:** 0.7 miles

**Elevation Gain:** 350'

**Use:** Hikers only

**Access Location:** North Trailhead

**Description:** Trail ascends several switch-backs, before gently climbing the west face while offering views of the Willamette's Coast Fork.

*Note: Connector trails are not described. Connector trails can be found on the map.*

## Howard Buford Recreation Area Visitor Code of Conduct

- Please observe park hours: Dawn to Dusk. Lane Code 6.570. There is no overnight camping within Howard Buford Recreation Area, except by reservation in the group camp area. Lane Code 6.565
- Visitors shall observe the hiker only or hiker/equestrian trail designations. Please refer to the trail map.
- Only authorized motorized vehicles and bicycles shall not be operated on trails. Lane Code 6.530-1
- Dogs must be kept on a leash no longer than six feet in length on trails 1 and 2. On all other trails, dogs must be under the owner's voice command. Lane Code 6.540. Dog owners must pick up and properly dispose of their dog's waste matter while in park. Lane Code 6.585. Both these rules are in place to ensure the safety of all park visitors and their animals.
- Users shall not disturb or remove any vegetation, wildlife, or natural features. Lane Code 6.520.
- Unauthorized signing or trail marking is not allowed.
- Users are encouraged to stay on designated trails. Users are asked not to use trails, which have been closed or are being renovated. Off trail use causes erosion, which then becomes unsafe for use.
- No person may discharge any weapon capable of harming persons, wildlife, or property. Lane Code 6.510
- Please leave valuables at home and not left in car while visiting the park.
- No fires, charcoal or portable cooking stoves are allowed within park. Lane Code 6.505
- All trash, garbage or other refuse must be placed in the receptacles provided. Lane Code 6.535
- No person may operate a concession nor engage in the business of advertising, soliciting or selling of goods or services. Lane Code 6.525

**The Visitor Code of Conduct is in place to ensure all park users have a fun and safe time.**  
**Enjoy your visit!**



# Howard Buford Recreation Area

